

**Do not turn over or open this
booklet until told to do so**

CEA

Common Entrance Assessment

Paper 1

Saturday 14 November 2009

Time: 1 Hour

Please fill in the following from your admission card:

Your Candidate Number _____

Your Assessment Centre _____

Your Date of Birth _____

Answer all 58 questions in this booklet

Association for Quality Education Limited

NOT TO BE FILLED
IN BY THE PUPIL

MATHEMATICS

| Page | Marks | Score | Check |
|-----------------|-------|-------|-------|
| 1 | (4) | | |
| 2 | (3) | | |
| 3 | (1) | | |
| 7 | (2) | | |
| 8 | (2) | | |
| 9 | (2) | | |
| 10 | (2) | | |
| 13 | (3) | | |
| 14 | (5) | | |
| 18 | (3) | | |
| 19 | (2) | | |
| 20 | (3) | | |
| TOTAL 32 | | | |

NOT TO BE FILLED
IN BY THE PUPIL

ENGLISH

| Page | Marks | Score | Check |
|--------------------|-------|-------|-------|
| 4 | (3) | | |
| 5 | (5) | | |
| 6 | (3) | | |
| 11 | (1) | | |
| 12 | (4) | | |
| 15 | (1) | | |
| 16 | (6) | | |
| 17 | (1) | | |
| 21 | (2) | | |
| 22 | (6) | | |
| TOTAL 32 | | | |
| TOTAL SCORE | | | |

1. The **10 numbers** below show the number of electronic gadgets in the homes of 10 primary school pupils.

5 2 8 3 8 3 5 7 7 2

What is the **mean** (average) number of gadgets?

Write your answer in the space below.

_____ gadgets

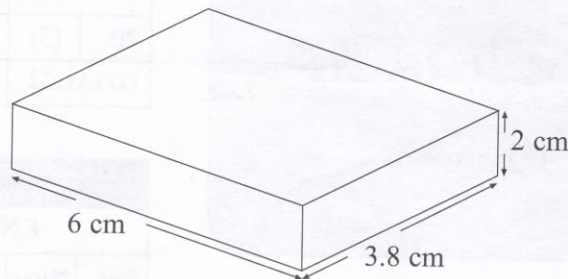
2. Look again at the 10 numbers.

What is the **range**?

Write your answer in the space below.

_____ gadgets.

3. The **cuboid** below is 6 cm by 3.8 cm by 2 cm.



What is the **volume** of this cuboid? Write your answer in the space below.

_____ cm³

- 4.(a) What is **7:52 am** as a **24 hour clock** time? Write your answer in the space below.

- (b) What is **7:52 pm** as a **24 hour clock** time? Write your answer in the space below.

GO STRAIGHT TO PAGE 2

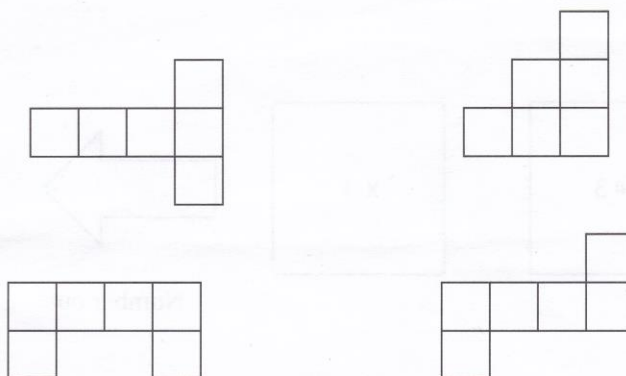
Do not write
in this column

(4)

5. Complete the table below by putting a **fraction** or a **percentage** in each of the four empty boxes.

| | | | | | |
|------------|-------------------|---------------|-----|---------------|---------------|
| Percentage | $33\frac{1}{3}\%$ | | 75% | | 20% |
| Fraction | | $\frac{1}{2}$ | | $\frac{1}{4}$ | $\frac{1}{5}$ |

6. A net of a cube can be folded to make a cube. Look at the four figures below. Circle the **two** figures that are nets of a cube.

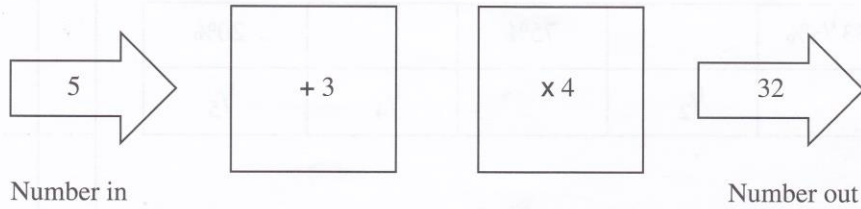


7. Look at the two calculations below. Complete each calculation by finding the **missing number**. Write your answers in the spaces below.

$$1642 - 647 = \underline{\hspace{2cm}}$$

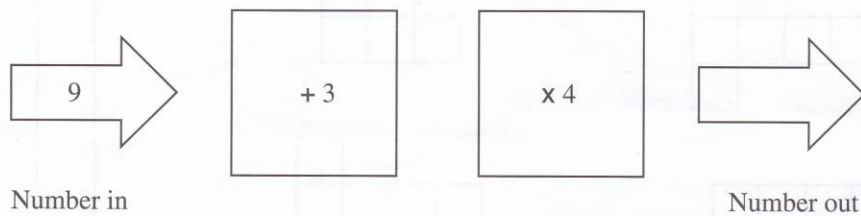
$$1487 + \underline{\hspace{2cm}} = 1642$$

8. Look at the function machine below.

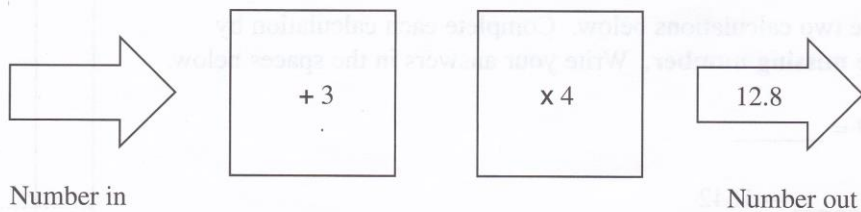


Complete the two function machines below by writing the **correct number in the blank arrow**.

(a)



(b)



Do not write
in this column.

Homework! Oh, Homework!Do not write
in this column

Homework! Oh, homework!
 I hate you! You stink!
 I wish I could wash you
 away in the sink,
 if only a bomb
 would explode you to bits.
 Homework! Oh, homework!
 You're giving me fits.

I'd rather take baths
 with a man-eating shark,
 or wrestle a lion
 alone in the dark,
 eat spinach and liver,
 pet ten porcupines,
 than tackle the homework
 my teacher assigns.

Homework! Oh, homework!
 You're last on my list,
 I simply can't see
 why you even exist,
 if you just disappeared
 it would tickle me pink.
 Homework! Oh, homework!
 I hate you! You stink!

Jack Prelutsky

9. Three animals are mentioned in the poem. Write their names in the spaces below.

10. Which of these words **best** describes the poem? Tick ☒ the best answer.

serious ☐

humorous ☐

depressing ☐

exciting ☐

GO STRAIGHT TO PAGE 5**(3)**

11. The four words **teacher**, **reminds**, **carefully** and **difficult** are used in the sentence below.

My teacher always reminds us to think carefully before answering difficult homework questions.

Tick ☒ the correct box in the table below to show which of the four words is used as a **verb**, a **noun**, an **adjective** or an **adverb** in the sentence.

| | verb | noun | adjective | adverb |
|-----------|------|------|-----------|--------|
| teacher | | | | |
| reminds | | | | |
| carefully | | | | |
| difficult | | | | |

12. Write the **past tense** of the following words in the spaces below. Be careful with your spelling. The first has been done for you.

| | |
|---------|----------|
| assign | assigned |
| wash | _____ |
| explode | _____ |
| give | _____ |
| stink | _____ |

13. Look at the **last verse** of the poem. Find the **phrase of four or five words** that is closest in meaning to the words: **I would be delighted.**

Write the phrase in the space below.

GO STRAIGHT TO PAGE 6

Do not write
in this column

(5)

14. The last line of the second verse of the poem uses the word **assigns**. Look at the four statements below. Tick ☒ the box opposite the correct statement. Only **one** of the statements is correct.

Do not write
in this column

When my teacher **assigns** a homework, it means that:

- | | |
|--|--------------------------|
| she writes her name at the end of the homework | <input type="checkbox"/> |
| she keeps a record of each pupil's homework mark | <input type="checkbox"/> |
| she asks each pupil to mark their partner's homework | <input type="checkbox"/> |
| she tells the pupils what they must do for homework | <input type="checkbox"/> |

15. Find the **word** in the poem closest in meaning to each of the following. Write your answer in the space below.

- having a nasty smell _____
- blow up _____
- vanished from sight _____

16. (a) The temperature in Belfast is 3°C .
The temperature in Glasgow is 8°C lower than in Belfast.

What is the temperature in Glasgow?
Write your answer in the space below.

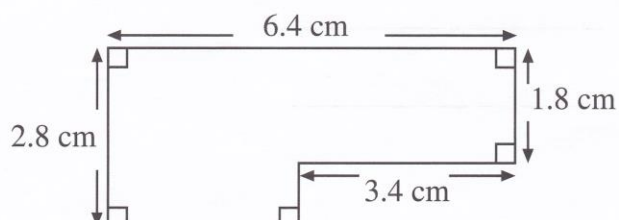
_____ $^{\circ}\text{C}$

- (b) The temperature in Edinburgh is -4°C .
The temperature in Dresden is 7°C lower.

What is the temperature in Dresden?
Write your answer in the space below.

_____ $^{\circ}\text{C}$

17. Look at the shape below.



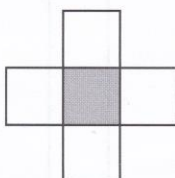
Find the **perimeter** of the shape. Write your answer in the space below.

_____ cm

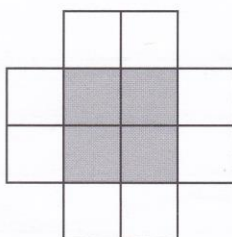
Do not write
in this column

18. Look at the sequence of three patterns below. Each pattern is made up of shaded and unshaded squares. For example, **pattern 2** has **4 shaded** squares and **8 unshaded** squares.

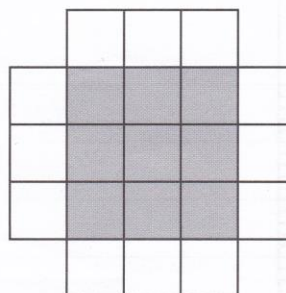
Pattern 1



Pattern 2



Pattern 3



Look at the table below for the number of **unshaded** squares in each pattern.

| Pattern | 1 | 2 | 3 |
|------------------|---|---|----|
| Unshaded squares | 4 | 8 | 12 |

How many **unshaded** squares are there in **pattern 7**? Write your answer in the space below.

_____ unshaded squares

19. Look at the table below for the number of **shaded** squares in each pattern.

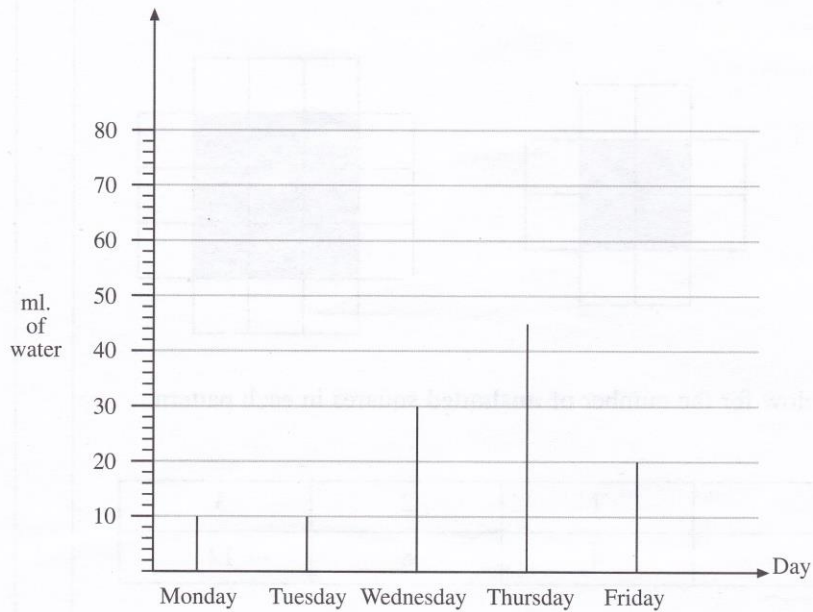
| Pattern | 1 | 2 | 3 |
|----------------|---|---|---|
| Shaded squares | 1 | 4 | 9 |

How many **shaded** squares are there in **pattern 8**? Write your answer in the space below.

_____ shaded squares

Do not write
in this column

20. Nora's pet hamster is ill. The vet tells Nora to give the hamster water each day. Nora must keep a record of the amount of water the hamster drinks each day. Nora draws the graph below. The graph shows how many millilitres of water the hamster drinks over 5 days.



- (a) The hamster had more water to drink on Friday than on Monday.
How much more? Write your answer in the space below.

_____ ml

- (b) On what **day** did the hamster drink the **greatest** amount of water?
Write your answer in the space below.

21. Over two **consecutive** days there is a **50% increase** in the amount of water the hamster drinks. Write the two days in the spaces below.

_____ and _____

Do not write
in this column

22. Write a number in the box below that makes the statement true.

15 is % of 60

23. An ice skater spins on the ice. She turns $3\frac{1}{2}$ times before stopping.
How many degrees has she turned?
Write your answer in the space below.

°

Do not write
in this column

The passage you are about to read contains five errors. Read the passage and then answer the questions that follow it.

A missed bin collection

Dear Sir,

I am a schoolboy and this is the first letter I've ever written. (line 1)
 I am writing to ask you to collect our bin on the day you say (line 2)
 you will, Last week our bin wasn't collected. This made (line 3)
 my mum furious and she is more strict on days when shes (line 4)
 furious. (line 5)

A foul smell is coming from our bin. My mum tells me that (line 6)
 bins can be a health hasard and that I shouldn't play near (line 7)
 smelly bins. She says that if bins are pushed over they (line 8)
 can attract rats. Can you see my problem. I want to play (line 9)
 in our alley, but I don't want to disobey my mum. (line 10)

I'm writing this letter because my mum's to polite to complain. (line 11)
 But my uncle Peter says, "You don't get if you don't ask" and (line 12)
 so I'm asking you to send someone to collect our bin. If you (line 13)
 do as I ask, I promise I'll never write to you again. (line 14)

Yours faithfully,
 Gerard Hiddick

24. Each line of the passage is numbered. A question mark is needed instead of a full stop on one line of the passage. Tick ☒ the number of the line in which the question mark is needed.

- line 6 ☐
 line 8 ☐
 line 9 ☐
 line 13 ☐

Do not write
 in this column

25. In one line of the passage a comma has been used incorrectly. A full stop rather than a comma should have been used. Tick ☒ the number of the line in which this error was made.

line 3 ☐
 line 10 ☐
 line 12 ☐
 line 14 ☐

26. There is an apostrophe missing from one of the words in the passage. Tick ☒ the number of the line containing the word with the missing apostrophe.

line 2 ☐
 line 4 ☐
 line 8 ☐
 line 12 ☐

27. A word has been used incorrectly in the passage. Tick ☒ the number of the line containing the incorrect word.

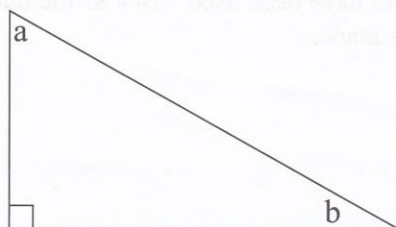
line 1 ☐
 line 6 ☐
 line 10 ☐
 line 11 ☐

28. There is a spelling error in one of the lines of the passage. Tick ☒ the number of the line containing the spelling error.

line 5 ☐
 line 7 ☐
 line 9 ☐
 line 12 ☐

Do not write
in this column

29. Look at the right-angled triangle below.



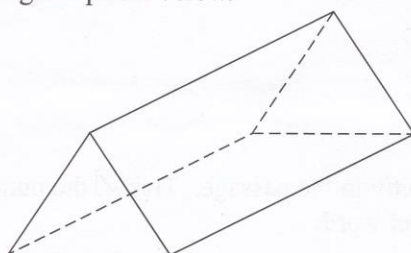
Tick ☒ the statements below that are **true**:

angle **a** and angle **b** add to make 180° ☐

angle **a** and angle **b** are both acute angles ☐

angle **a** and angle **b** add to make 90° ☐

30. Look at the triangular prism below.



Write the correct number in each of the spaces below.

The triangular prism has _____ **faces**.

The triangular prism has _____ **vertices**.

31. Look at the numbers below.

Tick ☒ the number in which **3** stands for **3 units**.

400.03 ☐

403.2 ☐

502.3 ☐

231.2 ☐

Do not write
in this column

32. Work out the cost of **20 cm** of ribbon at £3.80 **per metre**.
Write your answer in the space below.

_____ pence

33. A custard cream weighs **24 grams**. Only **33 $\frac{1}{3}$ %** of its weight is cream.
How many **grams** of cream are in **50 custard creams**?
Write your answer in the space below.

_____ g

34. Fergus has to **fill** bags with sand from a container. **The container** holds **3 $\frac{1}{3}$ kg** of sand. **Each bag** holds **$\frac{1}{4}$ kg** of sand. How many full bags of sand can Fergus get from the container? Write your answer in the space below.

_____ bags

35. Four types of bottle are used to store wine.

Bottle **A** holds **1.58 litres**.

Bottle **B** holds **1.7 litres**.

Bottle **C** holds **742 ml**.

Bottle **D** holds **1628 ml**.

Arrange the bottles **in order** from the bottle that holds the **smallest** amount of wine to the bottle that holds the **greatest** amount. **Write a letter** in each of the spaces below to show the correct order of the bottles. The bottle holding the smallest amount of wine has been done for you.

C

(smallest)

(greatest)

36. A family goes on a long journey. Their car uses **9.7 litres** of petrol **each hour**. If the family travels for **8 hours**, how many litres of petrol does the car use? Write your answer in the space below.

_____ litres

Do not write
in this column

The Gingerbread Man

The gingerbread man gave a gingery shout:

"Quick! Open the oven and let me out!"

He stood up straight in his baking pan.

He jumped to the floor and away he ran.

"Catch me," he called, "if you can, can, can."

The gingerbread man met a cock and a pig

And a dog that was brown and twice as big

As himself. But he called to them all as he ran,

"You can't catch a runaway gingerbread man."

The gingerbread man met a reaper and sower.

The gingerbread man met a thresher and mower;

But no matter how fast they scampered and ran

They couldn't catch up with a gingerbread man.

Then he came to a fox and he turned to face him.

He dared Old Reynard to follow and chase him;

But when he stepped under the fox's nose

Something happened. What do you s'pose?

The fox gave a snap. The fox gave a yawn,

And the gingerbread man was gone, gone, GONE.

Rowena Bennett

37. Find the **word** that goes at the end of the eight words below to make a true sentence of nine words.

The gingerbread man spends much of the poem

Tick ☒ the **best** answer.

singing

☐

cooking

☐

eating

☐

running

☐

Do not write
in this column

38. What is a gingerbread man? Tick ☒ the **best** answer.

- a person ☐
- a biscuit ☐
- an animal ☐
- a reaper ☐

Do not write
in this column

39. These five words are not in alphabetical order:

dotty discovery discrete discontinue catalogue

Write the words in alphabetical order in the space below. The first word has been done for you.

catalogue _____

40. In the final verse the word **s'pose** is used. Write the word without the apostrophe and using all its letters. Write your answer in the space below.

41. Find the **word** in the **third verse** of the poem that means **dashed about playfully**.

Write your answer in the space below.

42. Which **line** of the **final verse** of the poem tells us that the gingerbread man challenged the fox to pursue him? Write the line in the space below.

43. According to the poem, one of these four statements is **true**.
Tick ☒ the true statement.

the dog in verse two was twice as big as the pig ☐

the dog in verse two was twice as big as the cock ☐

the dog was twice as big as the gingerbread man ☐

the dog was twice as big as itself ☐

Do not write
in this column

44. Look at the four statements below. Tick ☒ each statement true or false.

Do not write
in this column

all four sides of a square have the same length

True

☐

False

☐

the three angles of a triangle add up to 360°

☐
☐

all the angles of an isosceles triangle are the same

☐
☐

opposite sides of a parallelogram are equal in length

☐
☐

45. Look at the five fractions below

$\frac{5}{12}$

$\frac{1}{36}$

$\frac{2}{18}$

$\frac{4}{9}$

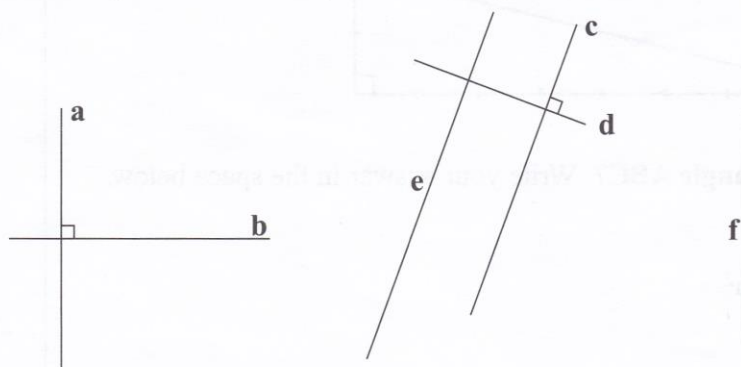
$\frac{5}{6}$

Claire writes these fractions **in order** from smallest to largest.

Which fraction will be the **middle fraction** when Claire writes them in order? Write your answer in the space below.

46. Look at the lines marked **a**, **b**, **c**, **d**, **e** and **f** drawn in the figure below.

Line **c** is **parallel** to line **e**, and line **a** is **parallel** to line **f**.



Tick ☒ each of the statements below true or false.

True

False

line **a** is **perpendicular** to line **b**

☐
☐

line **a** is **parallel** to line **e**

☐
☐

line **d** is **perpendicular** to line **e**

☐
☐

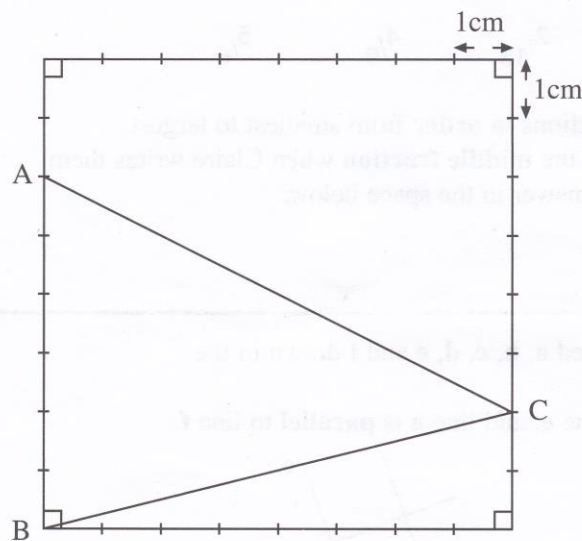
line **b** is **perpendicular** to line **f**

☐
☐

47. Michael and Susan agreed to share the cost of a video game. The game cost £27.60. Michael paid 25% of the cost. How much did Susan pay? Write your answer in the space below.

£ _____

48. Look at the square below. Each of its sides is 8 cm long. A triangle ABC is drawn in the square.

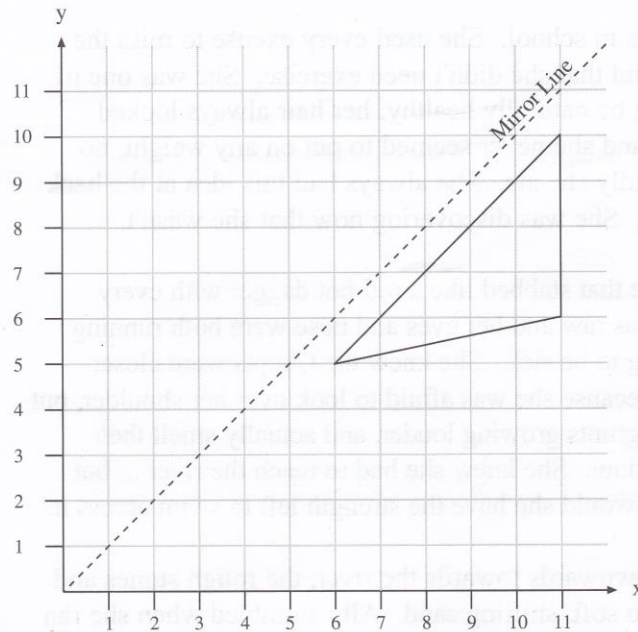


What is the area of the triangle ABC? Write your answer in the space below.

_____ cm²

Do not write
in this column

49. In the figure below there is a triangle and a mirror line.



Do not write
in this column

The triangle is reflected in the mirror line and a **new triangle** is formed.
What are the **coordinates** of the **three vertices** of the **new triangle**? Write
your answers in any order in the spaces below.

(,) (,) (,)

50. A map has the following scale:

1 centimetre represents 5 kilometres.

Two towns are **5.8 centimetres** apart **on the map**. What is the **actual distance** between the towns? Write your answer in the space below.

_____ km

51. Two churches are **27.5 kilometres** apart.
How far apart are the churches **on the map**?
Write your answer in the space below.

_____ cm

Windlord

Ally had always hated sports in school. She used every excuse to miss the class, and she liked to pretend that she didn't need exercise. She was one of those people who seemed to be naturally healthy: her hair always looked shining, her skin was clear and she never seemed to put on any weight, no matter how much or how badly she ate. She always had this idea at the back of her mind that she was fit. She was discovering now that she wasn't.

There was a stitch in her side that stabbed like a red-hot dagger with every breath she took, her throat was raw and her eyes and nose were both running. She was afraid she was going to be sick. She knew the Chopts were close; she didn't know how close because she was afraid to look over her shoulder, but she could hear their panting grunts growing louder, and actually smell their musty, vaguely unpleasant odour. She knew she had to reach the river ... but even if she reached the river would she have the strength left to swim across it?

The rocky ground sloped downwards towards the river, the rough stones and grit gradually giving away to soft, shifting sand. Ally stumbled when she ran onto the beach, the sands seeming to clutch at her feet. She staggered on for a dozen more steps before she actually fell, the tips of her fingers splashing into the river's icy water. Behind her the beasts howled in triumph.

Michael Scott

52. **Two of Ally's senses** tell her that the Chopts are getting closer. Tick ☒ the two senses.

| | |
|----------|--------------------------|
| seeing | <input type="checkbox"/> |
| hearing | <input type="checkbox"/> |
| smelling | <input type="checkbox"/> |
| tasting | <input type="checkbox"/> |
| touching | <input type="checkbox"/> |

53. What **word** in the final paragraph tells us that when Ally fell, the Chopts were confident that she wouldn't escape? Write the word in the space below.

GO STRAIGHT TO PAGE 22Do not write
in this column

(2)

According to the passage, only **one** of the statements below is correct.
Tick ☒ the correct statement.

Even if Ally could outrun the Chopts, she might still be in danger because

- she might not have enough energy left to swim across the river ☐
- she might cut the soles of her feet on the rough stones and grit ☐
- she might be unable to survive in the river's icy cold water ☐
- she might be unable to keep her balance in the soft, shifting sand ☐

5. The passage mentions creatures called Chopts. **Using only the information in the passage**, tick ☒ the statement that **best** describes the Chopts.

- Chopts are members of the wolf family ☐
- Chopts can't move quickly on sand ☐
- Chopts can't swim ☐
- Chopts are nasty creatures ☐

6. Find the **three or four word phrase** in the final paragraph which is closest in meaning to **being replaced by**. Write the phrase in the space below.

7. What **two verbs** tell us that before she fell, Ally wasn't running smoothly on the beach? Write your answers in the spaces below.

8. What **phrase** used in the **first paragraph** of the passage means **to be conscious of** or **to believe**? You may use **between six and eleven words** in your phrase. Write your answer in the space below.

LOOK OVER YOUR PAPER UNTIL TIME IS UP.

Do not write
in this column