

Reading scales when measuring capacity

When you're measuring liquid you have to **read scales**.

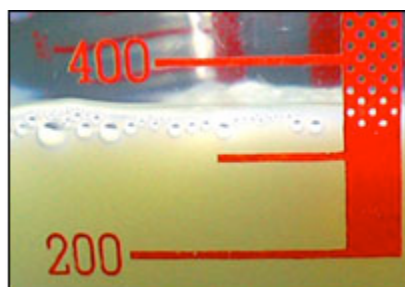
First, look to see what the **unit of measurement** is. Is the scale in **millilitres (ml)**, **centilitres (cl)** or **litres (l)**?



This scale is in **millilitres**.



This scale is in **litres**.



Next, look to see what **divisions** on the scales are **labelled**. Look at the scale on this jug. Can you see how only some of the divisions on the scale are labelled?

You might need to **estimate** when reading off the scale. The short line is half way between the 200 and 400 ml labels so it must indicate 300 ml. Here, the level of liquid is about half way between this short line and the 400 ml label so you could estimate there is 350 ml of milk in the jug.